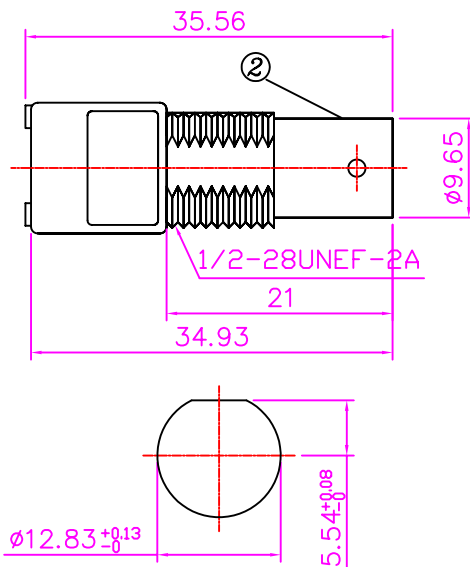
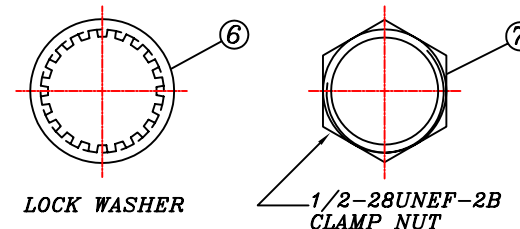
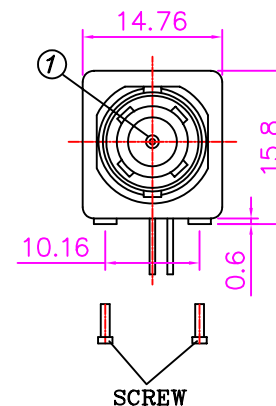


PCB HOLE CONFIGURATION
RECOMMENDED PANEL CUTOUTS



RECOMMENDED MOUNTING HOLE
MAXIMUM PANEL THICKNESS: 5.5MM
RECOMMENDED MOUNTING TORQUE:
12 INCH-POUNDS MAX



Normal Impedance --50Ω
Frequency Range --0-4 GHz
Operating Voltage --500 volts rms
Contact Resistance --3.0 milliohms max.(gold)
Insulation Resistance--5000 megohms min

- ① CENTER CONTACT : PHOSPHOR BRONZE,GOLD PLATING
- ② BODY : DIECAST (ZINC#3),NICKEL PLATING
- ③ INSULATOR : PE-606
- ④ SCREWS : STEEL, NICKEL PLATING
- ⑤ GROUND TAIL : BRASS WIRE,TIN LEAD PLATING
- ⑥ WASHER : PHOSPHOR BRONZE,NICKEL PLATING
- ⑦ NUT : BRASS,NICKEL PLATING

Note:
Tolerances:
X. ±0.5
X.X ±0.3
X.XX±0.2

Revised dimensions and description



YEAR ROUND Technology Corp.

TEL: 886 2 22901234 www.yr.com.tw

Title	50 OHM BNC R/A PCB MOUNT JACK, METAL BODY WITH SCREWS			
P/N	5BR-01331S	Checked By	Drawn By	Approved By
D/N	5BR-01331S,R	柯 93,06,08 宏融	趙 93,06,08 龍鴻	白 93,06,08 添發
SCALE	2:1			
UNIT		MM		